

Amenities

Apple TV with Siri Remote



- The living room and bedroom is equipped with an Apple TV 4K Generation with a Siri Remote. Please note that the remote is made of glass and may break if dropped on a hard surface.
- To turn on the TV tap any button on the remote.
- To change the volume, on the Apple TV Siri Remote , press **+** or **-** to turn the volume up or down.



Amenities

Apple TV Subscriptions

- The Apple TV includes the following subscriptions which you are more than welcome to use:

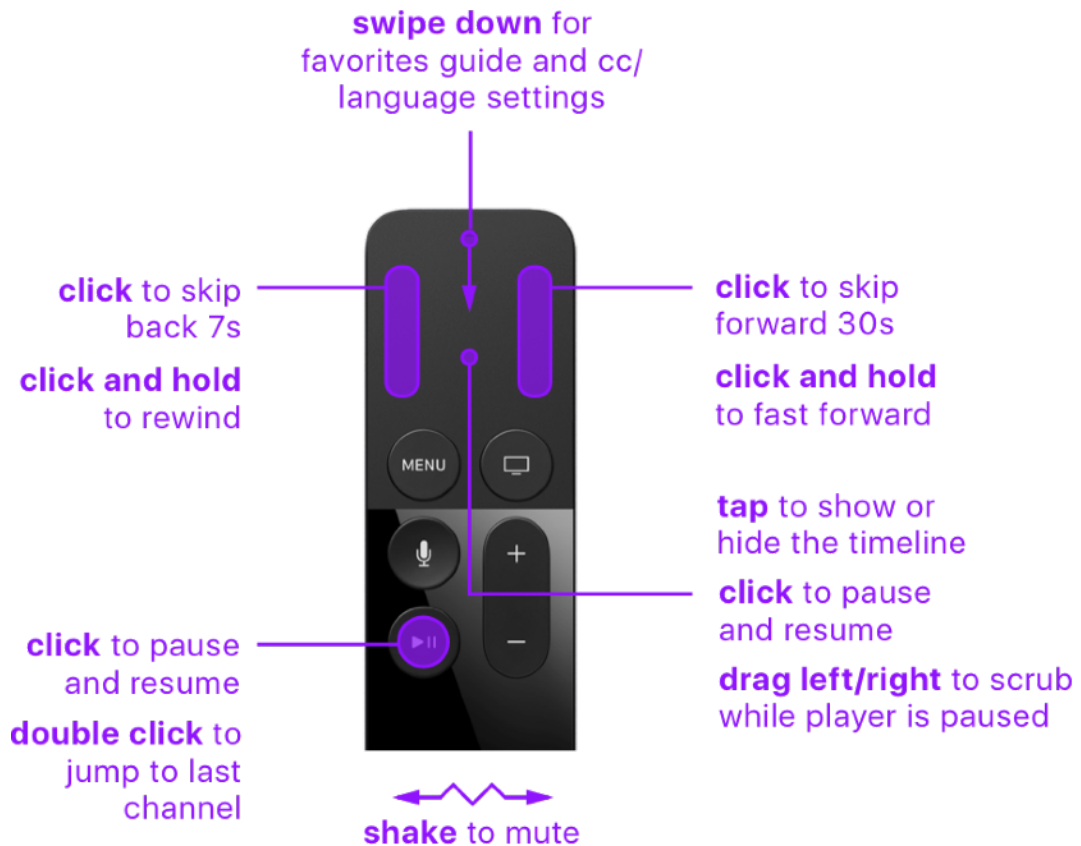
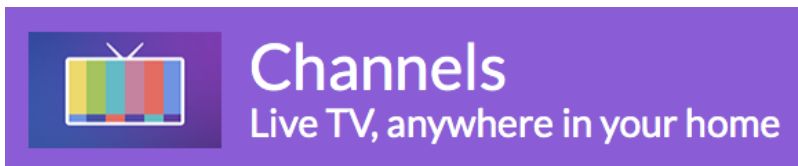
	Apple Music is a streaming music service which offers unlimited access to millions of songs and streaming radio.
	Netflix is a streaming video service which offers a variety of videos and tv shows.

- To access these services, simply navigate to the app on the Apple TV with the Siri Remote. Use the touchpad on the remote (top part) to navigate.

Amenities

Local TV

- A few local, over-the-air tv broadcasts can also be viewed via the Apple TV.
- Note that you DO NOT need to change inputs to watch TV. TV is accessed via the “Channels” app on the Apple TV.
See <https://getchannels.com> for more information.
- This app will provide a program guide, so that you’ll always know what’s on TV.



Amenities

Local TV via Apple TV

- Follow the guide below to launch the app:
 1. Tap a button on the Apple TV remote.
 2. Locate the channels icon.



3. Use the Apple TV remote trackpad to select the app so that it “pops out” like you see above. The press down on the trackpad to select the app and the app will launch.

Apt 1

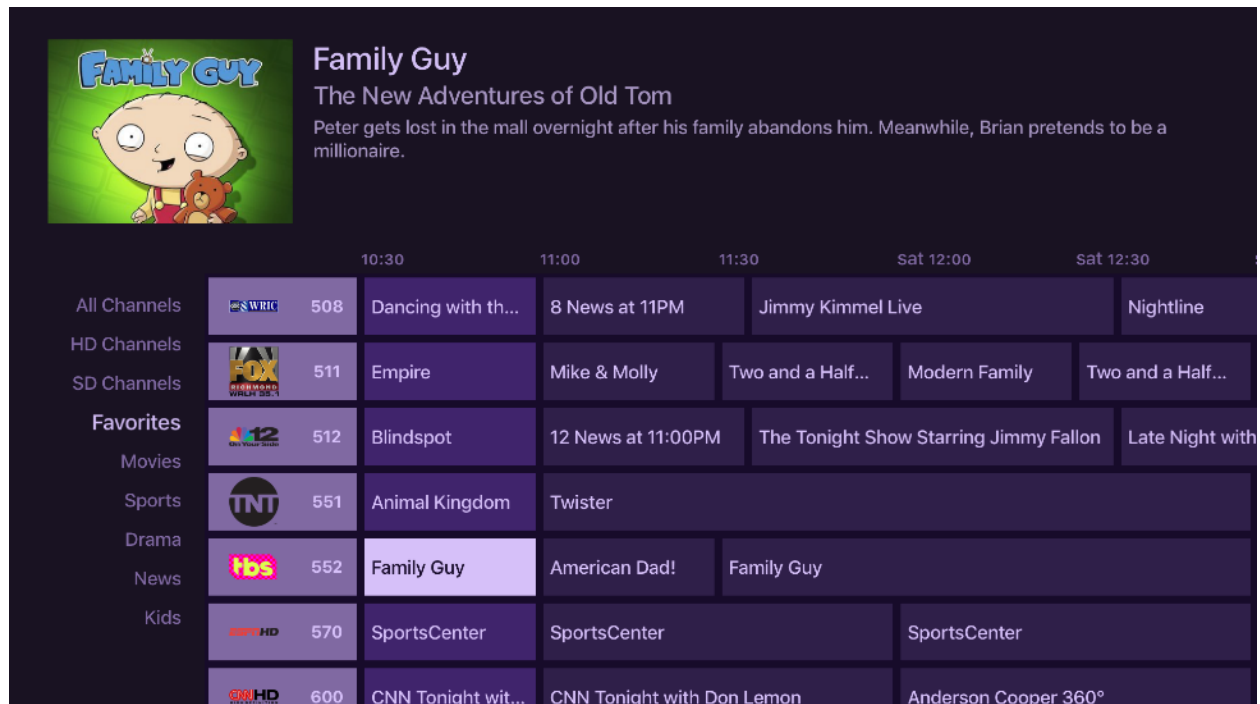


 **Apple TV Remote Trackpad**

Amenities

Local TV via Apple TV

- One the app is launched, you will have many options, including a program guide.



Technology Troubleshooting

What happens if the the TV doesn't turn on?

We have new (2019) Vizio TV's in the Bedroom and the Living Room. These are connected to Apple TV, which we find offers a superior experience to that provided by the smart TV.

In some very rare cases the system will become non-responsive and need to be reset.

You can do that by:

In the Living Room - Turning off the APC box next to the TV for about 10 seconds and turning it back on.

In the Bedroom - Turning off the small APC box behind the TV for about 10 seconds and turning it back on.